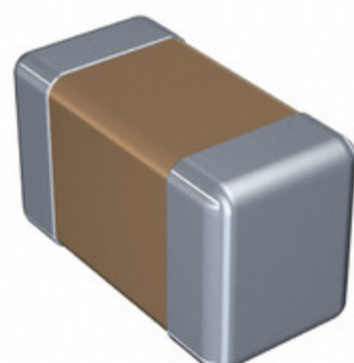


C0603C301J8HAC7867



Part Number: C0603C301J8HAC7867
Manufacturer: KEMET
Description: CAP CER 0603 300PF 10V ULTRA STA
Data sheet: [Ultra Stable, X8R Dielectric](#)

RoHS Status: Lead free / RoHS Compliant
Ship From: Hong Kong
Shipment Way: DHL/Fedex/TNT/UPS/EMS

Images are for reference only.
 See Product Specifications for product details.
 Buy C0603C301J8HAC7867 with confidence from
 Component-World.HK, 1 Year Warranty

[Request For Quotation](#)

PRODUCT PARAMETER

Part Number	C0603C301J8HAC7867	Manufacturer	KEMET
Description	CAP CER 0603 300PF 10V ULTRA STA	Lead Free Status / RoHS Status	Lead free / RoHS Compliant
Quantity Available	3727464 pcs	Data sheet	Ultra Stable, X8R Dielectric
Category	Capacitors	Voltage - Rated	10V
Tolerance	±5%	Thickness (Max)	0.034" (0.87mm)
Temperature Coefficient	X8R	Size / Dimension	0.063" L x 0.032" W (1.60mm x 0.80mm)
Series	C	Ratings	-
Packaging	Tape & Reel (TR)	Package / Case	0603 (1608 Metric)
Other Names	C0603C301J8HACTU	Operating Temperature	-55°C ~ 150°C
Mounting Type	Surface Mount, MLCC	Moisture Sensitivity Level (MSL)	1 (Unlimited)
Manufacturer Standard Lead Time	18 Weeks	Lead Spacing	-
Lead Free Status / RoHS Status	Lead free / RoHS Compliant	Height - Seated (Max)	-
Features	Low ESL, High Temperature	Failure Rate	-
Detailed Description	300pF ±5% 10V Ceramic Capacitor X8R 0603 (1608 Metric)	Capacitance	300pF
Applications	General Purpose		

Component-World.com is a Reliable Stocking Distributor of Electronic Components. We specialize in all KEMET series electronic components. We have 3727464 pieces of KEMET C0603C301J8HAC7867 in stock available now. Request a quote from electronics components distributor at Component-World.com, our sales team will contact you within 24 hours.
 RFQ Email: info@Components-World.com

RELATED PRODUCTS

	Part#: C0603C301J4HACAUTO Description: CAP CER 0603 300PF 16V ULTRA STA	Manufacturers: KEMET	RFQ
	Part#: C0603C301J5HAC7867 Description: CAP CER 0603 300PF 50V ULTRA STA	Manufacturers: KEMET	RFQ
	Part#: C0603C301J3HAC7867 Description: CAP CER 0603 300PF 25V ULTRA STA	Manufacturers: KEMET	RFQ
	Part#: C0603C301K8HAC7867 Description: CAP CER 0603 300PF 10V ULTRA STA	Manufacturers: KEMET	RFQ
	Part#: C0603C301J5GACTU Description: CAP CER 300PF 50V COG/NP0 0603	Manufacturers: KEMET	RFQ
	Part#: C0603C301K3HAC7867 Description: CAP CER 0603 300PF 25V ULTRA STA	Manufacturers: KEMET	RFQ
	Part#: C0603C301J3HACAUTO Description: CAP CER 0603 300PF 25V ULTRA STA	Manufacturers: KEMET	RFQ
	Part#: C0603C301J1HACAUTO Description: CAP CER 0603 300PF 100V ULTRA ST	Manufacturers: KEMET	RFQ
	Part#: C0603C301J5HACAUTO Description: CAP CER 0603 300PF 50V ULTRA STA	Manufacturers: KEMET	RFQ
	Part#: C0603C301J8HACAUTO Description: CAP CER 0603 300PF 10V ULTRA STA	Manufacturers: KEMET	RFQ
	Part#: C0603C301J5GALTU Description: CAP CER 300PF 50V NP0 0603	Manufacturers: KEMET	RFQ
	Part#: C0603C301K5HAC7867 Description: CAP CER 0603 300PF 50V ULTRA STA	Manufacturers: KEMET	RFQ
	Part#: C0603C301K4HACAUTO Description: CAP CER 0603 300PF 16V ULTRA STA	Manufacturers: KEMET	RFQ
	Part#: C0603C301K5HACAUTO Description: CAP CER 0603 300PF 50V ULTRA STA	Manufacturers: KEMET	RFQ
	Part#: C0603C301K1HAC7867 Description: CAP CER 0603 300PF 100V ULTRA ST	Manufacturers: KEMET	RFQ
	Part#: C0603C301K4HAC7867 Description: CAP CER 0603 300PF 16V ULTRA STA	Manufacturers: KEMET	RFQ
	Part#: C0603C301K3HACAUTO Description: CAP CER 0603 300PF 25V ULTRA STA	Manufacturers: KEMET	RFQ
	Part#: C0603C301K1HACAUTO Description: CAP CER 0603 300PF 100V ULTRA ST	Manufacturers: KEMET	RFQ
	Part#: C0603C301J3GACTU Description: CAP CER 300PF 25V NP0 0603	Manufacturers: KEMET	RFQ
	Part#: C0603C301J4HAC7867 Description: CAP CER 0603 300PF 16V ULTRA STA	Manufacturers: KEMET	RFQ

Related keywords for C0603C301J8HAC7867

KEMET C0603C301J8HAC7867	C0603C301J8HAC7867 distributor	C0603C301J8HAC7867 supplier	C0603C301J8HAC7867 price
C0603C301J8HAC7867 download datasheet	C0603C301J8HAC7867 datasheet	C0603C301J8HAC7867 stock	buy C0603C301J8HAC7867
KEMET C0603C301J8HAC7867	Kemet [MIL] C0603C301J8HAC7867		